




LINE OFFICIAL



PIPATANASIN BUILDING

 (+66) 61 751 8778

 www.pipatanasin.com

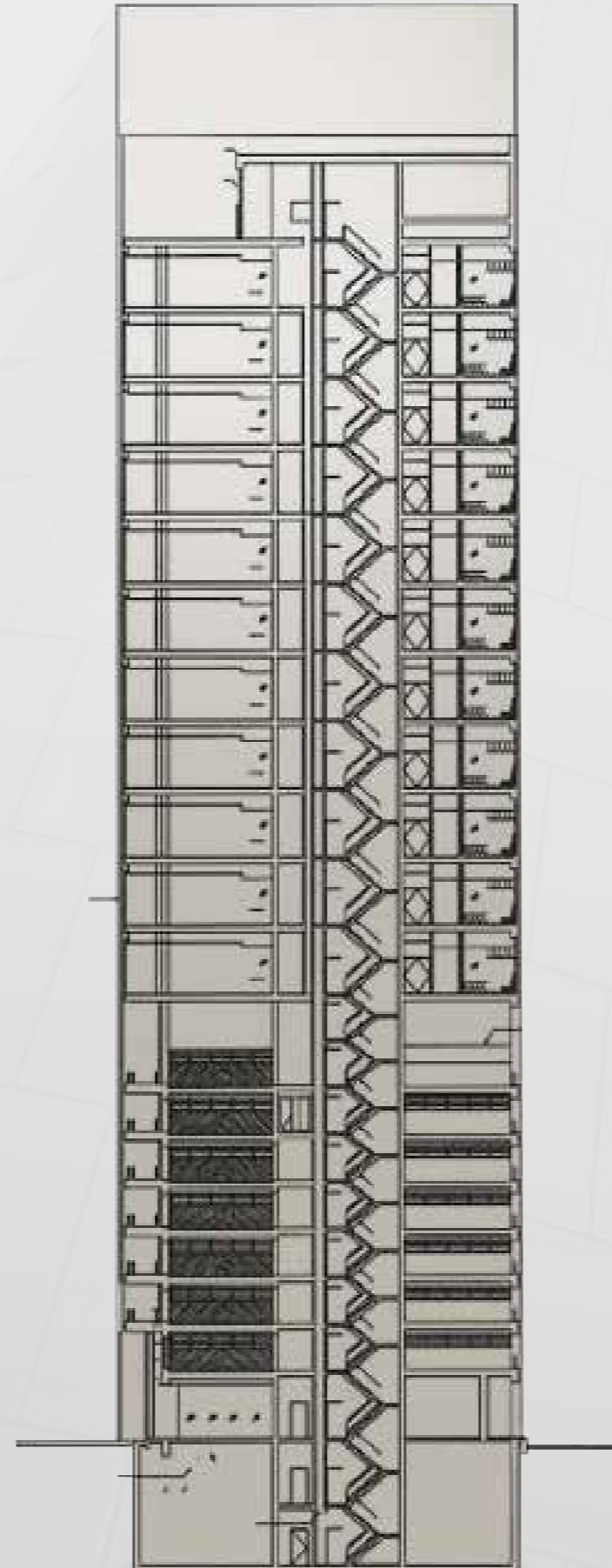
 office@pipatanasin.com

BUILDING INFORMATION

Address	6/10 Naradhiwat - Rajanagarindra Road, Thung Maha Mek, Sathorn, Bangkok 10120
Year built	2007
Ownership Structure	Single Ownership
Lettable Area	8,158 SQM.
Storey	20 Floor <ul style="list-style-type: none"> ◦ Ground floor (Retail) 157 and 279 SQM. ◦ 9th - 20th floor (Office space) 705 SQM.
Parking space	102 cars
Air conditioning	VRV-II air conditioning system (Separated control)
Security	24 Hours security guard and CCTV
Cargo Lift	1
Passenger Lift	3
Transportation	BRT - Technic Krungthep Station BTS - Chong Nonsi Station



Building Layout



Typical Floor 9th - 20th
(750 SQ.M. / FLOOR)

Car Park 2nd - 8th

Retail A (157 SQ.M.)

Retail B (279 SQ.M.)

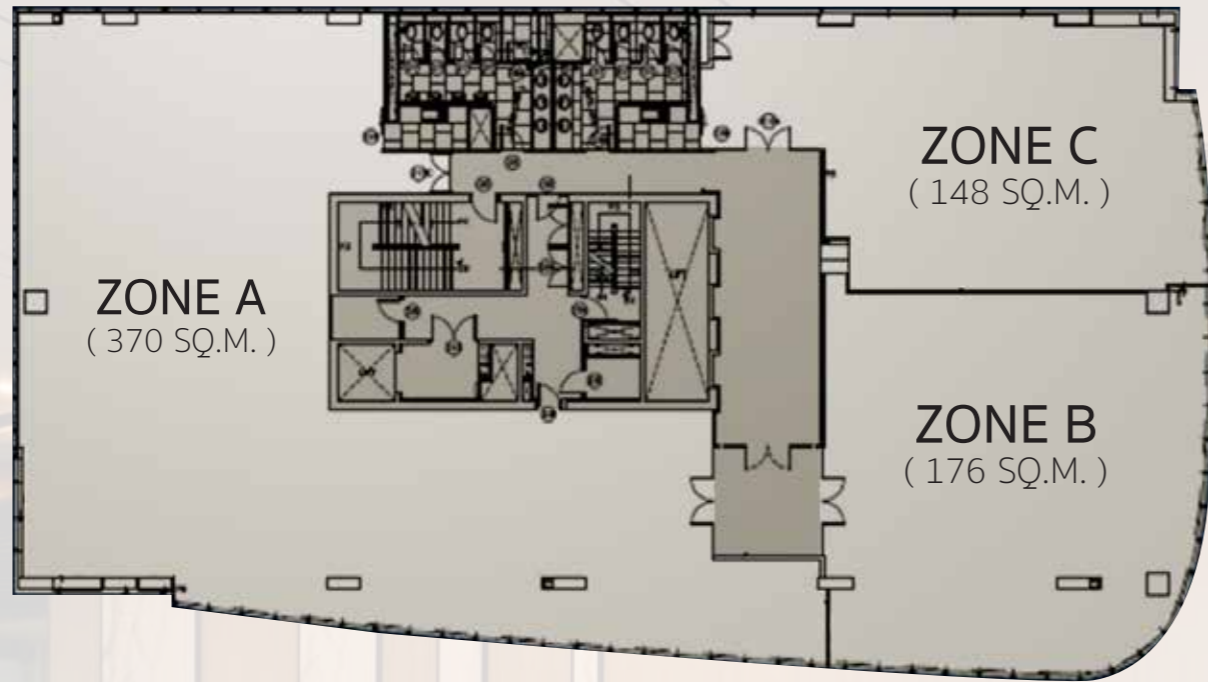
Ground floor Layout



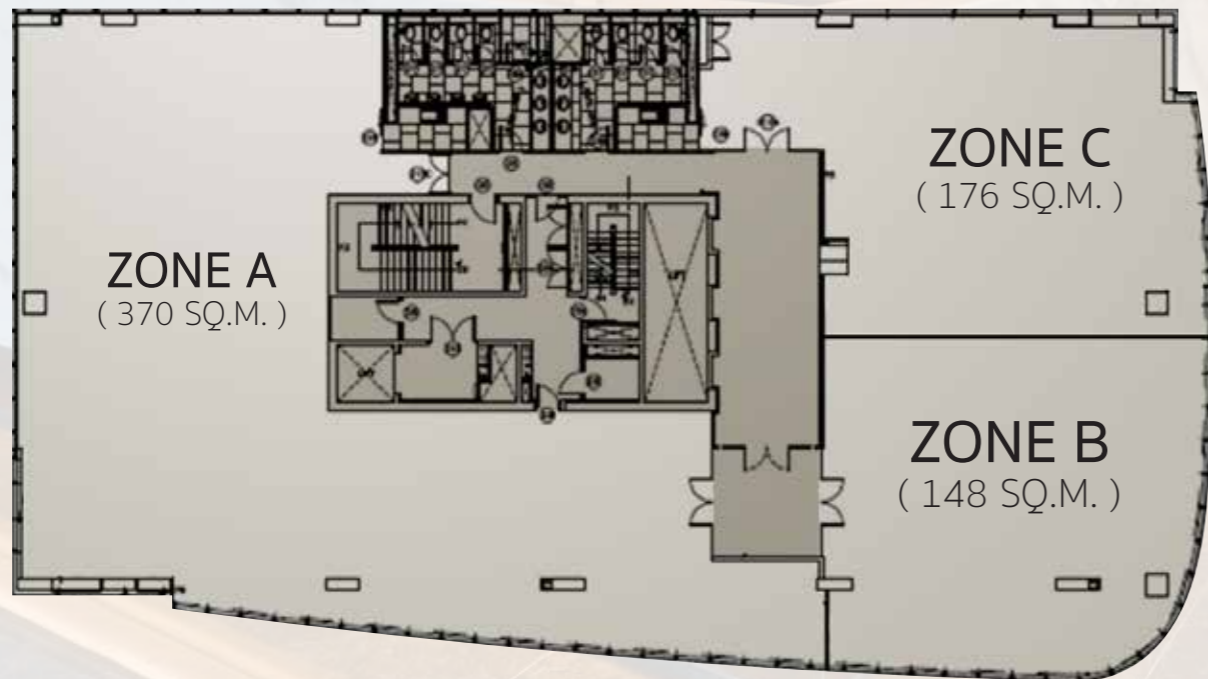
Typical floor Layout
9th - 20th FLOOR



9th,12th FLOOR
LAYOUT



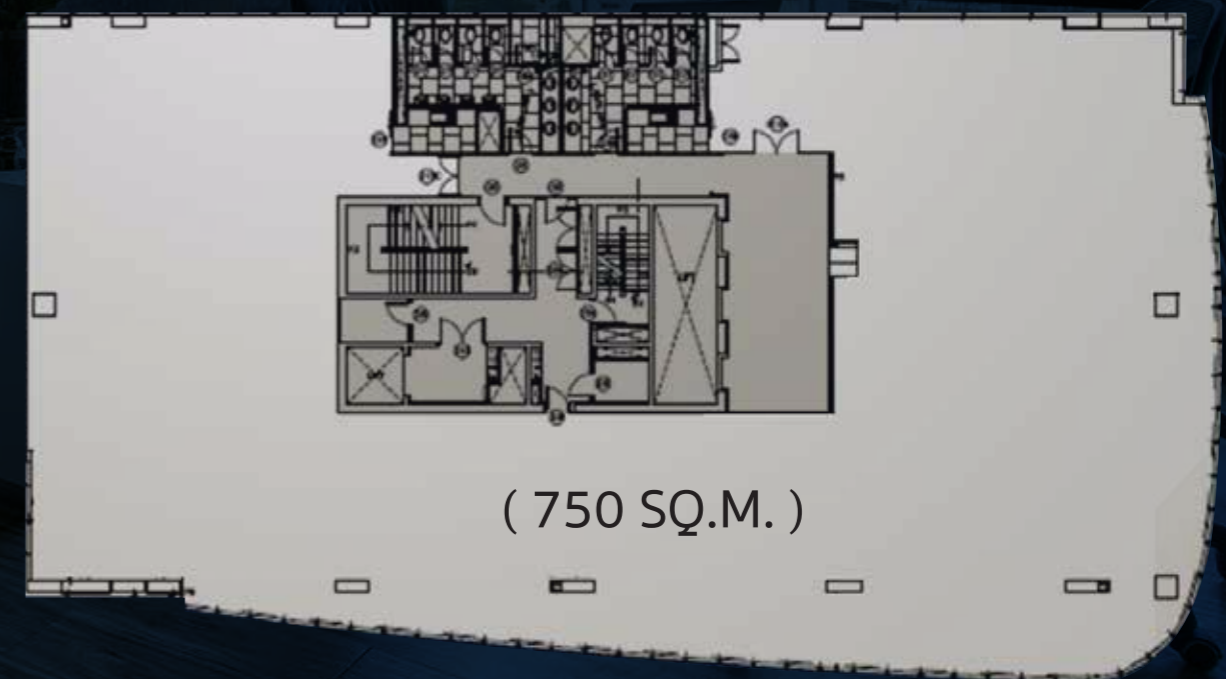
10th,11th FLOOR
LAYOUT

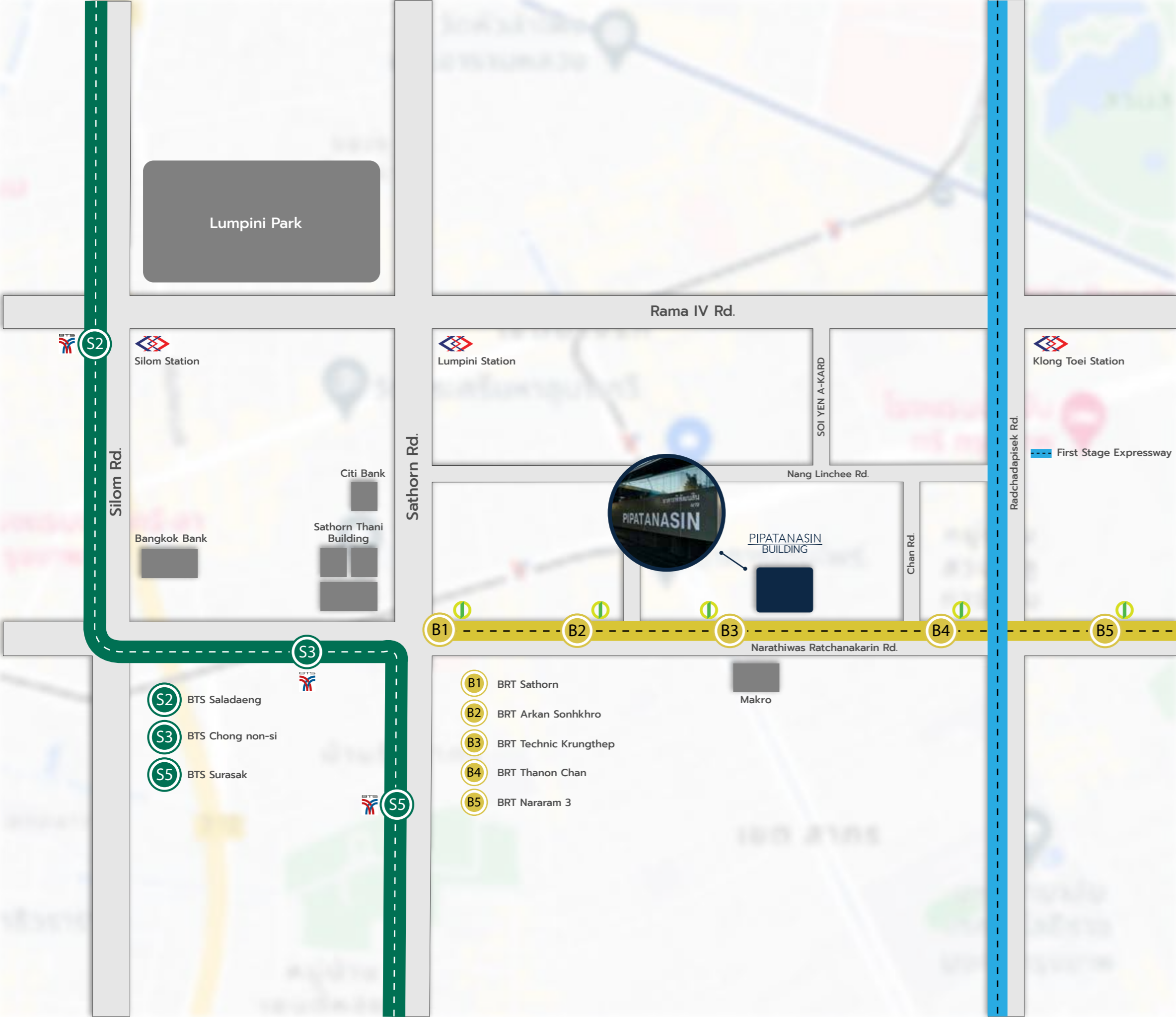


14th,20th FLOOR
LAYOUT




15th FLOOR
LAYOUT





CONTACT

 (+66) 61 751 8778

 office@pipatanasin.com

 www.pipatanasin.com



 ADD FRIEND